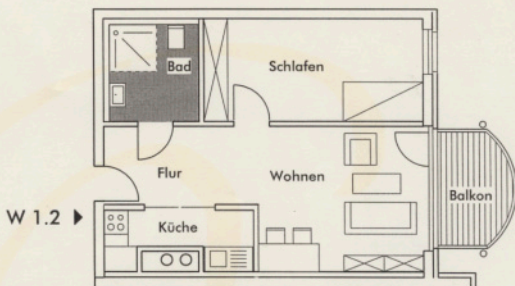
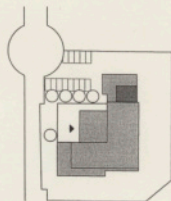


1.OG M 1:100

Rotkehlchen

Wohnung 1.2
49,10 qm



Schlafen	14,52 qm
Bad	6,36 qm
Küche	4,66 qm
Flur/Wohnen	<u>22,33 qm</u>
	$47,87 \text{ qm} \times 0,97 = 46,44 \text{ qm}$
Balkon	$5,32 \text{ qm} \times 0,50 = 2,66 \text{ qm}$
WHG 1.2 Rotkehlchen	49,10 qm