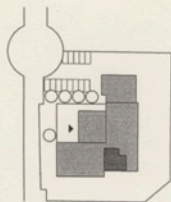


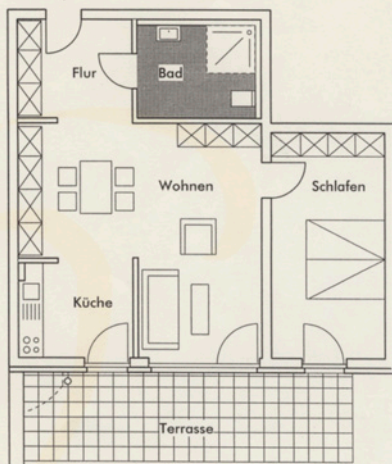
EG M 1:100

Meise

Wohnung 0.3  
74,21 qm



W 0.3



Schlafen	16,22 qm
Bad	7,70 qm
Flur	7,19 qm
Küche	6,87 qm
Wohnen	<u>28,42 qm</u>
	$66,40 \text{ qm} \times 0,97 = 64,41 \text{ qm}$
Terrasse	<u>19,59 qm</u>
	$19,59 \text{ qm} \times 0,50 = 9,80 \text{ qm}$
WHG 0.3 Meise	74,21 qm