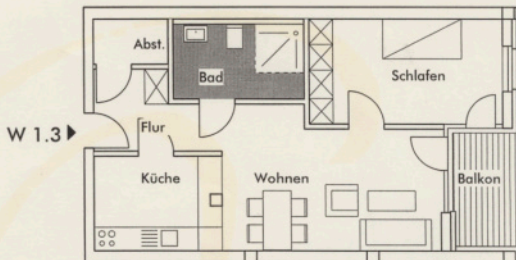
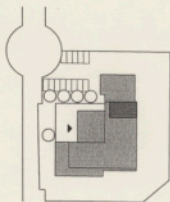


1.OG M 1:100

*Lerche*

Wohnung 1.3  
54,06 qm



Schlafen	13,28 qm
Bad	6,72 qm
Flur	5,44 qm
Abstellraum	2,09 qm
Küche	7,57 qm
Wohnen	<u>18,94 qm</u>
	$54,04 \text{ qm} \times 0,97 = 52,42 \text{ qm}$
Balkon	$3,28 \text{ qm} \times 0,50 = 1,64 \text{ qm}$
WHG 1.3 <i>Lerche</i>	<b>54,06 qm</b>